

# Torfhús hat

**Torfhús** is a simple hat matching with the pullover under the same name. An easy project for beginners and a way of using your Léttlopi leftovers.



## Size (cm)

	S/M	M/L
Circumference (without stretching)	44	48

Length (with pompom)	28	28
-------------------------	----	----

## Needles and other materials

- ◇ 3.5mm and 4mm circular needles 40 cm
- ◇ 4mm double pointed needles or magic loop
- ◇ pompom maker size 85mm
- ◇ tapestry needle
- ◇ markers or scrap yarn

## Gauge

Léttlopi 10 × 10cm = 22 sts and 23 rows on  
4mm circular needles knitting chart 1

## Yarn

Léttlopi – 50 gr balls,  
~ approx 100 m

### *Turquoise & light grey*

<b>A</b> 1404 glacier blue	2 (2)
<b>B</b> 0054 ash	1 (1)

### *Beige & green*

<b>A</b> 1418 straw	2 (2)
<b>B</b> 1405 bottle green	1 (1)

### *Black petrol & orange*

<b>A</b> 1707 galaxy	2 (2)
<b>B</b> 1704 apricot	1 (1)

### *Light blue/pink & blue*

<b>A</b> 1702 milkyway	2 (2)
<b>B</b> 1403 lapis blue	1 (1)

Turquoise  
& light grey



Black petrol  
& orange



## Skills

Level: beginner/intermediate

- ◇ stranded colourwork knitting
- ◇ join and knit in the round
- ◇ half twisted rib
- ◇ decreasing and increasing
- ◇ weaving ends in
- ◇ hand sewing
- ◇ making pompom

## Abbreviations

- ◇ BM – beginning marker
- ◇ CO – cast on
- ◇ col – colour
- ◇ dec – decrease
- ◇ dpns – double pointed needles
- ◇ inc – increase
- ◇ k – knit
- ◇ k1tbl – knit one through back loop
- ◇ k2tog – knit two together
- ◇ p – purl
- ◇ rnd – round
- ◇ ssk – slip slip knit
- ◇ st(s) – stitch(es)
- ◇ WS – wrong side

## Notes

The hat is worked in the round using short circular needles. You will need to change to dpns or to magic loop when the circle becomes smaller.

For the cast on I recommend using a loose long tail cast on.

The rib is folded in half to inside and sewn by hand to WS. You will find helpful photos after the instructions.

Light blue/pink  
& blue



Beige  
& green



# PATTERN

Cast on loosely 92 (100) sts with col A using 3.5mm circular needle. Join into a circle, place BM at the beginning of the rnd and work half twisted rib: \*k1tbl, p1\* for 10 cm. Change to 4mm needles and inc 4 sts evenly spaced over rnd => 96 (104) sts.

K 1 rnd with col A. Work chart 1.

When the chart is completed dec 0 (2) sts evenly spaced => 96 (102) sts.

When the chart is completed dec 0 (2) sts evenly spaced => 96 (102) sts.

Divide the sts into 6 sections by placing 5 more markers every 16 (17) sts.

## Shape top:

- ♦ 1st dec rnd: work 6 times \*k1, k2tog, k until 2 sts before the marker, ssk\* => 84 (90) sts
  - ♦ Knit 1 rnd
  - ♦ 2nd dec rnd: work 6 times \*k1, k2tog, k until 2 sts before the marker, ssk\* => 72 (78) sts
  - ♦ Knit 1 rnd
  - ♦ 3rd dec rnd: work 6 times \*k1, k2tog, k until 2 sts before the marker, ssk\* => 60 (66) sts
  - ♦ 4th dec rnd: work 6 times \*k1, k2tog, k until 2 sts before the marker, ssk\* => 48 (54) sts
  - ♦ 5th dec rnd: work 6 times \*k1, k2tog, k until 2 sts before the marker, ssk\* => 36 (42) sts
  - ♦ 6th dec rnd: work 6 times \*k1, k2tog, k until 2 sts before the marker, ssk\* => 24 (30) sts
  - ♦ 7th dec rnd: work 6 times \*k1, k2tog, k until 2 sts before the marker, ssk\* => 12 (18) sts
  - ♦ Remove the markers, leave only the BM.
  - ♦ 8th dec rnd: Work 6 (9) times: k2tog => 6 (9) sts
- Break yarn and pull through remaining sts.

## Pompom

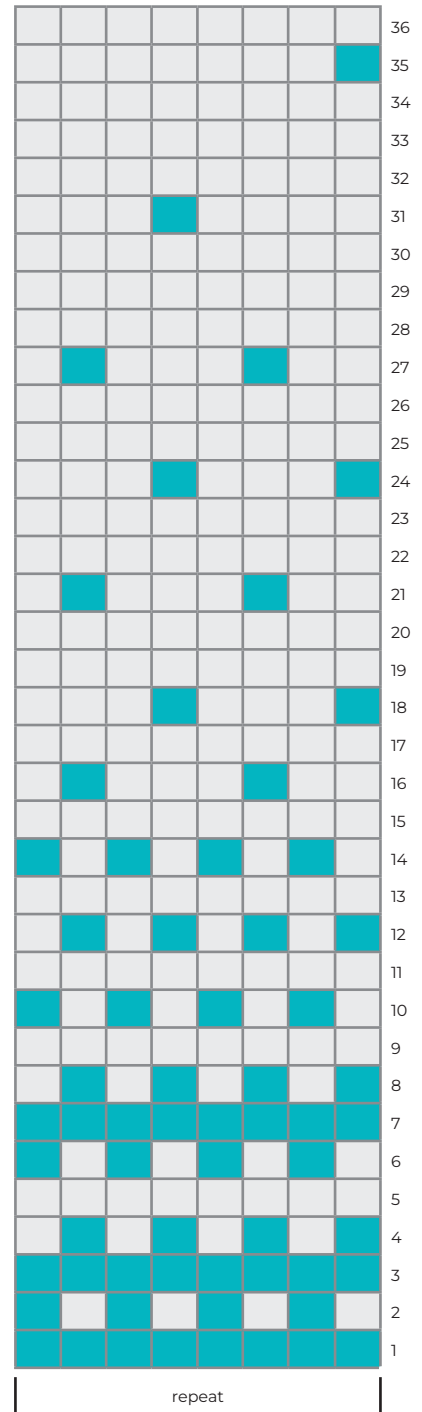
Create a medium size pompom. Use col A and wrap each arm of the pompom maker tightly at least 4 times.

## Finishing

Attach the pompom using a tapestry needle. Fold the rib in half to WS and sew the CO row to the WS (see the instructions on the next page).

Weave in loose ends. Leave to soak in lukewarm water together with a delicate soap or a liquid to wash wool, wash by hand, rinse. Block and lay flat to dry. When dry cut the excess yarn on pompom and brush it to give it the desired shape.

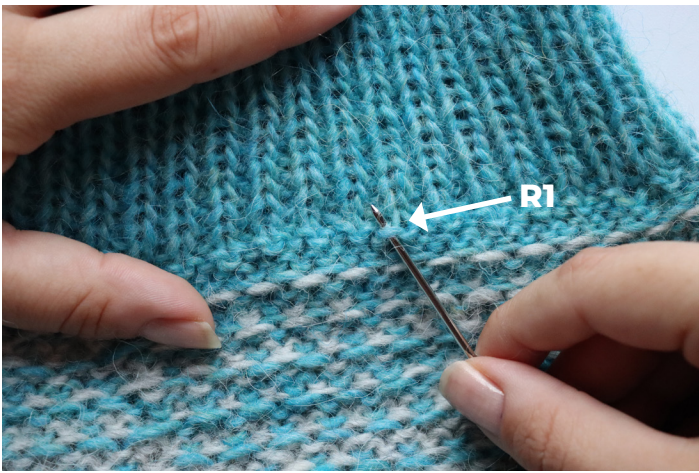
Chart 1



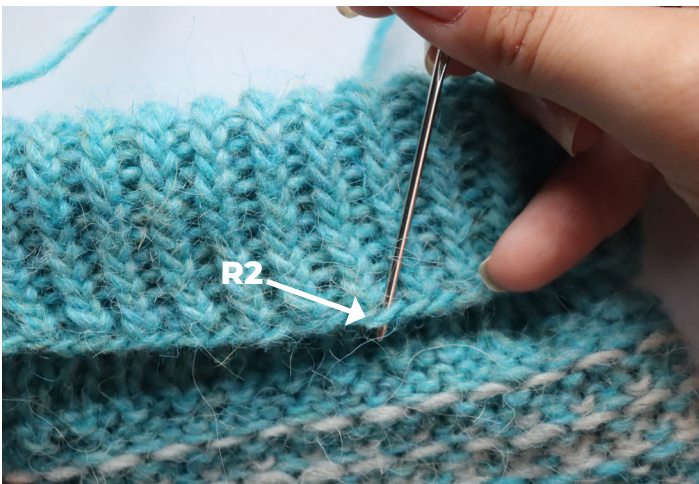
## Colours key



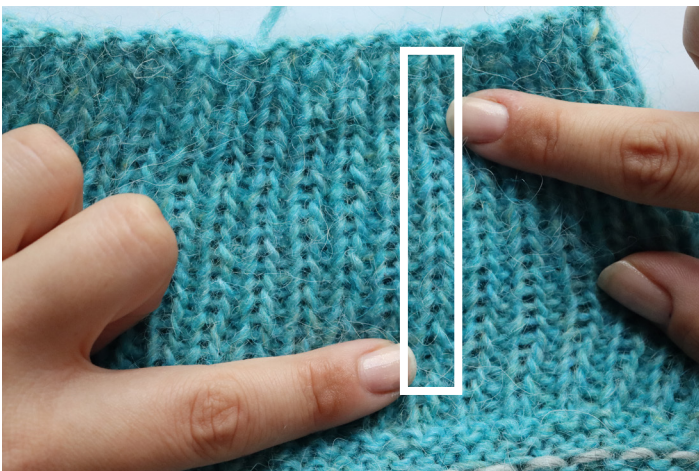
## Sewing instructions



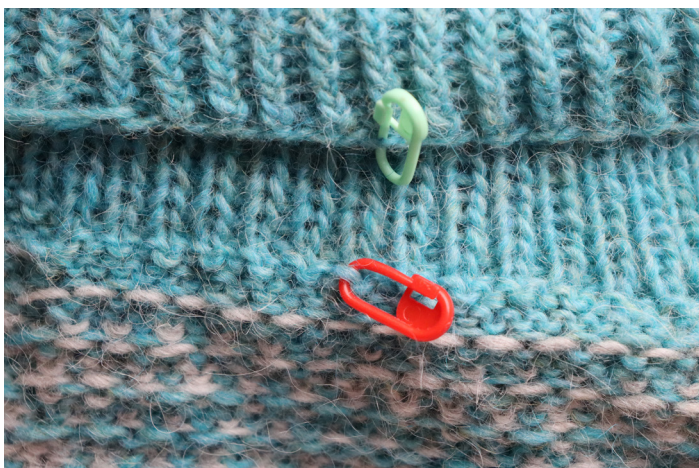
On the WS find the first row of only bulbs (after the ribbing).  
This is our R1 row.



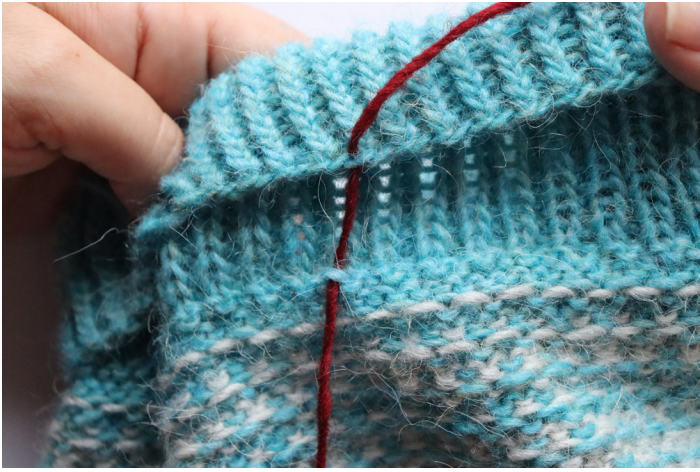
Fold the ribbing in half to the wrong side  
and find the cast on row.  
This is our R2 row



Remember that the stitches from the same  
column should align. If needed unfold again  
and check if the k sts face k sts and p sts  
face p sts.



You can sign the first st of R1 and the first st  
of R2 with markers after you identify them.  
Now you are ready to sew.



**1.** Enter from the bottom to the first st on R1 and the first st on R2.



**2.** Enter from above to the next st on the right on R2.



**3.** Enter from above back to the first st on R1.



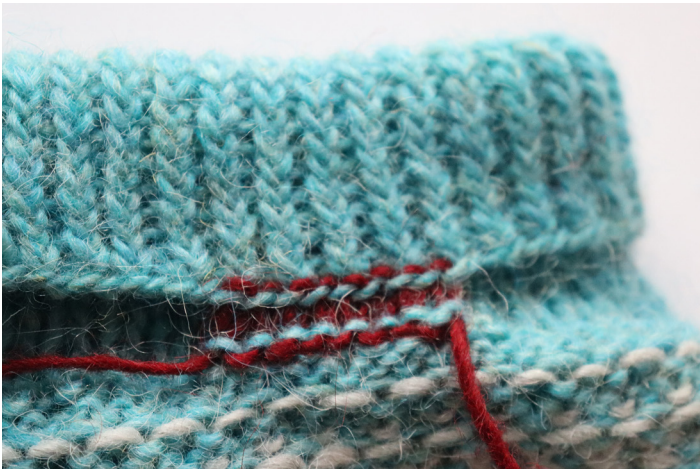
**4.** Enter from the bottom to the next st on the right on R1.



5. Enter from the bottom back to the st on R2 we used at the point 2.




Continue the same way.



Remember to tighten the string but leave a bit of space so the hat can stretch.



The red string is totally invisible on the RS but use the col A for sewing.



Pattern & photos are the intellectual propriety of Jigsknits, may not be reproduced, redistributed, sold or shared in full or in part, electronically or physically.

Products created from this pattern may be sold only if the designer (Jigsknits) is stated in a product's description.

**[contact@jigsknits.com](mailto:contact@jigsknits.com)**



[facebook.com/jigsknits](https://facebook.com/jigsknits)



[instagram.com/jigsknits](https://instagram.com/jigsknits)



[etsy.com/shop/Jigsknits](https://etsy.com/shop/Jigsknits)